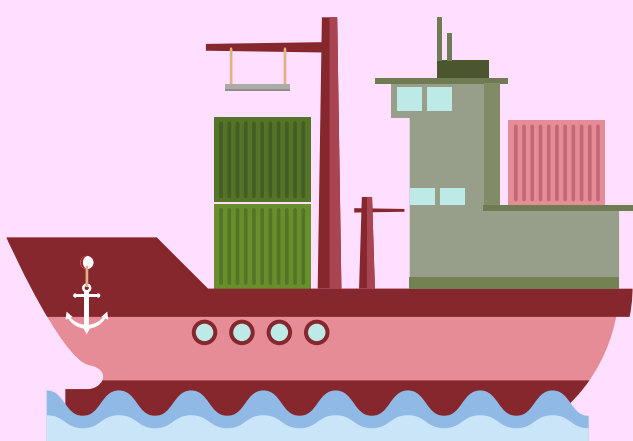


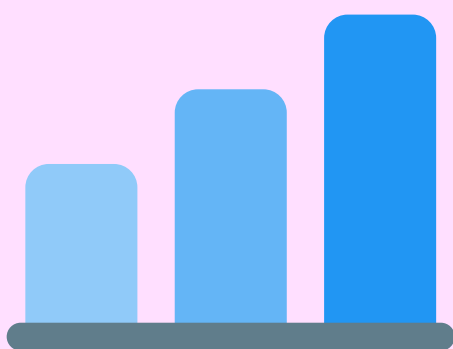
DIGITALISATION STATUS OF SMALL PORTS IN BSR

Report summary



2. METHODOLOGY

The report provides a SWOT analysis, including scoring of DRIP - Digital readiness index for ports (60%) and EMOPP- Operating performance of ports (40%). The methodology of the report can be adapted for small, medium-sized and large ports digital evaluation.



3. RESULT

Note: Explaining the scores

DRIP is calculated based on evaluation of Management (20%), Human Capital (20%), Technology (30%), Information (5%) and Funcionality (25%).

Ports are defined as follows:

1.0 - 2.5 = Analog Port	▬
2.5 - 3.5 = Monitor Port	▬
3.5 - 4.5 = Adopter Port	▬
4.5 - 5.5 = Developer Port	▬
5.5 - 6.0 = Smart Port	▬



1. ABOUT THE REPORT

In line with the Connect2SmallPorts project, part-financed by the INTERREG South Baltic Programme of the European Regional Development Fund (ERDF), the conducted report provides individual Digital Readiness Indexes for Ports (DRIP) retrieved from the implemented audits of over 30 seaports in the Baltic Sea Area.

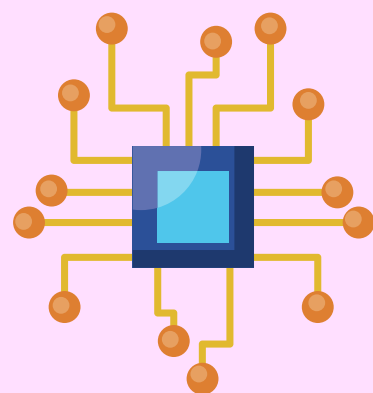


3. RESULT

3.1 DRIP score in average

Small ports	3,42
Middle size ports	3,53
Large ports	4,35

This means large ports have a competitive advantage by higher digital readiness to adapt and implement new digital technologies.



3. RESULT

Note: Classifying ports by different characteristics

It is important to classify ports by different characteristics (digitalisation level, port importance, port turnover, etc.). The aim is to find out which digitalisation level is reasonable for small and middle-sized ports.